

Sources of Income Data for Local Journalists

Paul Overberg
Wall Street Journal



Learn the terms

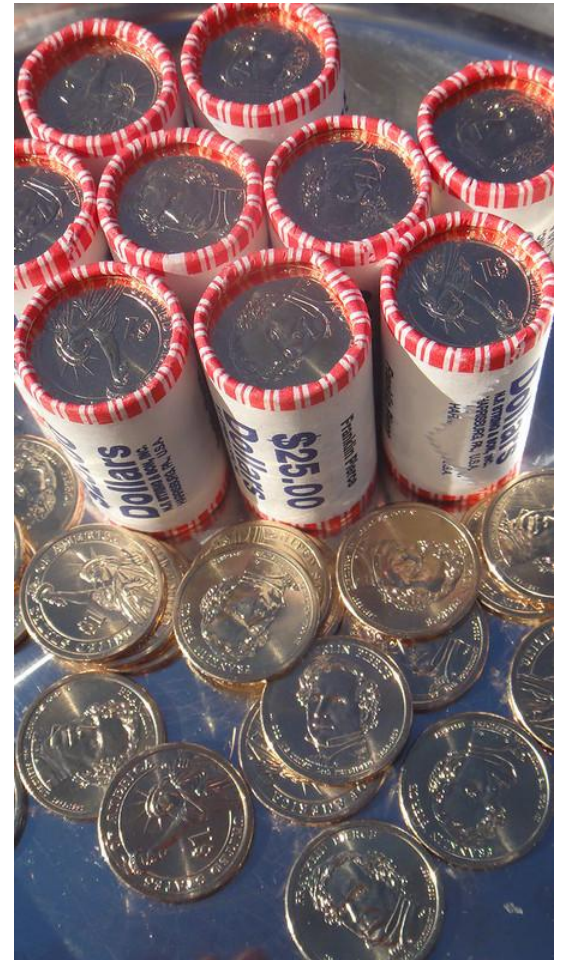
- Income: Almost all forms of money received
- Earnings: Wages, salaries, tips, bonuses, commission
- Median: Half make more, half make less
- Household: Any occupied housing unit
- Family: 2+ related people in a household
- Per capita: Includes all people



[Photo by Flickr user Brad Smith](#)

Income data: Old standbys

- Census: American Community Survey
- Census: CPS Annual Social and Economic Supplement (ASEC)
- BLS: Monthly employment situation
- IRS: Statistics of Income



Income data: Specialty flavors

- CPS: Earnings by occupation
- QCEW: Payroll
- LEHD PSEO: Earnings based on college major
- SIPP: Safety net benefits



American Community Survey

- Data released each fall for previous calendar year
- 1-year and 5-year data
- Coverage: National -> neighborhoods
- Income, poverty, income disparity
- Breakdowns: Sex, race, age of householder, occupation, college major, education, nativity, citizenship, number of earners, presence of children, etc.
- Write this down: [censusreporter.org](https://www.censusreporter.org)



ACS: Income

- 52 basic tables, some repeated for each race
- Types: earnings, SS, SSI, wage/salary, retirement, investment, public assistance
- Income groups, medians, aggregates

Table universe: Households				
Column	→	United States		United States
Less than \$10,000		7,118,907	±42,565	5.8% ±0%
\$10,000 to \$14,999		4,940,584	±35,307	4% ±0%
\$15,000 to \$19,999		4,838,678	±38,067	3.9% ±0%
\$20,000 to \$24,999		5,322,157	±42,105	4.3% ±0%
\$25,000 to \$29,999		4,984,288	±40,836	4.1% ±0%
\$30,000 to \$34,999		5,320,934	±41,677	4.3% ±0%
\$35,000 to \$39,999		4,933,391	±43,110	4% ±0%
\$40,000 to \$44,999		5,114,120	±38,752	4.2% ±0%
\$45,000 to \$49,999		4,620,661	±37,120	3.8% ±0%
\$50,000 to \$59,999		9,080,796	±47,065	7.4% ±0%
\$60,000 to \$74,999		12,247,929	±57,807	10% ±0%
\$75,000 to \$99,999		15,752,484	±75,827	12.8% ±0.1%
\$100,000 to \$124,999		11,650,162	±61,394	9.5% ±0%
\$125,000 to \$149,999		7,652,757	±44,359	6.2% ±0%
\$150,000 to \$199,999		8,802,761	±50,642	7.2% ±0%
\$200,000 or more		10,422,243	±46,629	8.5% ±0%

ACS: Poverty status

- 26 basic tables, several repeated by race
- Age, education, employment, household type, own/rent, SNAP benefits
- Income/poverty ratio:
B17002

Table universe: Population for Whom Poverty Status Is Determined

Column →	United States	
Under .50	5.5%	±0%
.50 to .74	3%	±0%
.75 to .99	3.9%	±0%
1.00 to 1.24	4%	±0%
1.25 to 1.49	4%	±0%
1.50 to 1.74	4.3%	±0%
1.75 to 1.84	1.7%	±0%
1.85 to 1.99	2.7%	±0%
2.00 to 2.99	15.8%	±0.1%
3.00 to 3.99	13.8%	±0.1%
4.00 to 4.99	10.6%	±0.1%
5.00 and over	30.8%	±0.1%

ACS: Shares of income by quintile

-- Shares: B19082

-- Upper ends: B19080

-- Means: B19081

Table universe: Households		
Table universe: Households		
Table universe: Households		
Column	→	<u>United States</u>
Lowest Quintile		14,521 ±51
Second Quintile		39,139 ±102
Third Quintile		66,006 ±121
Fourth Quintile		103,917 ±166
Highest Quintile		238,035 ±582
Top 5 Percent		430,662 ±1,784

ACS: Income disparity

-- Gini index: 0 to 1

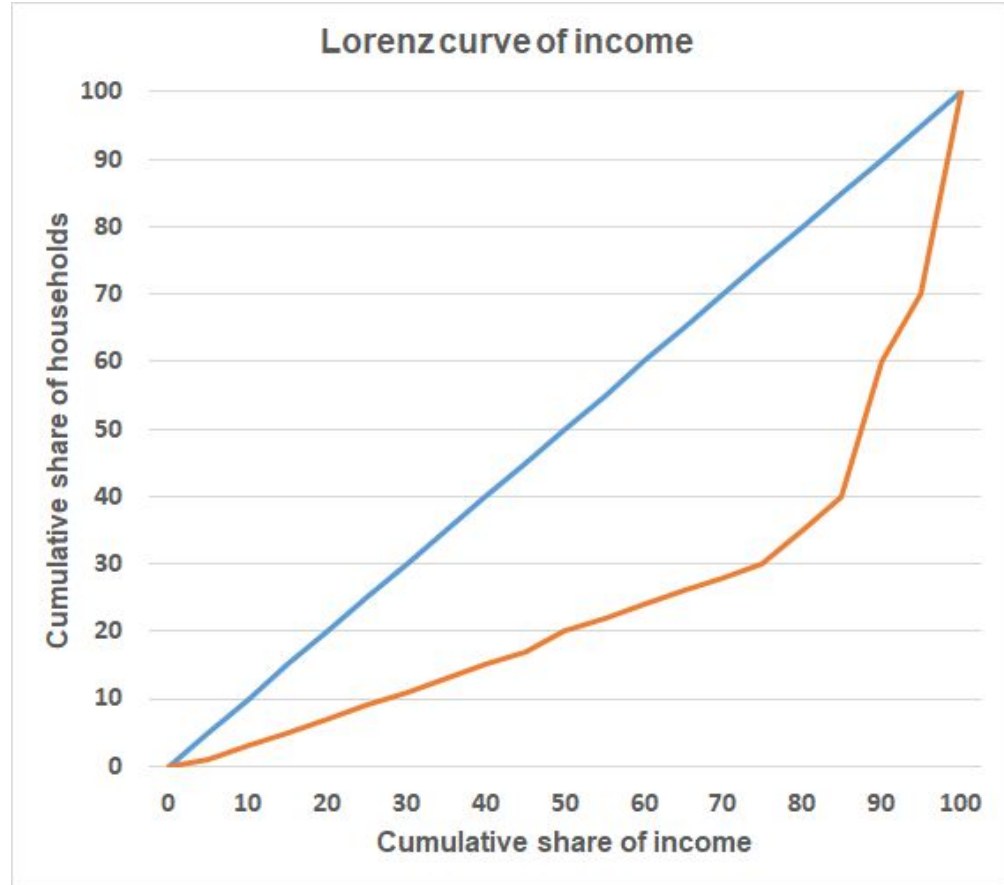
-- Based on Lorenz curve

-- Table B19083

-- NYC: 0.5473

Seattle: 0.4793

Des Moines: 0.4436



Thanks for listening!

Presentation:

bit.ly/NPF_Oct_27_income